

External Wall Installation **ResCom-WallBoard**

INTERNAL & EXTERNAL WALL LININGS

External Fire Rated Walls - Timber & Steel

When ResCom™ external wall board sheets are attached to the outside of the wall, the wall takes on the fire rating of the sheet.

A 9mm external sheet gives up to a 60 minute fire rating. A 12mm sheet gives a 120 minute fire rating and A 16mm sheet gives a 180 minute fire rating. There are a number of points to observe: Seek Technical Support

- Follow the fixing details described on the timber and steel wall installation brochures.
- External cladding of fire rated walls require particular attention to sealing all gaps, especially at internal and external corners.
- ResCom BP recommends the use of back blocking to all joints with the same thickness of ResCom external wall board. By placing a 150mm width strip of ResCom board glued with an appropriate fire rated or structural polyurethane adhesive. To be applied in full length minimum 4mm beads to all stud and noggings then screwed/nailed into place to allow adhesion. This will help eliminate any thermal breaches and give additional protection to the frame.
- Place back blocks over the face of studs/beams/noggings by gluing and fixing in place prior to installation of the wall boards.
- Since all fibre batt insulation loses its effectiveness when wet, ensure drainage is provided to remove condensation from the cavity. It is good practice to install the cladding on battens so the air movement helps to prevent moisture build up.
- Bulk insulation may be required to achieve specified acoustic R_w+C_{tr} and R values.

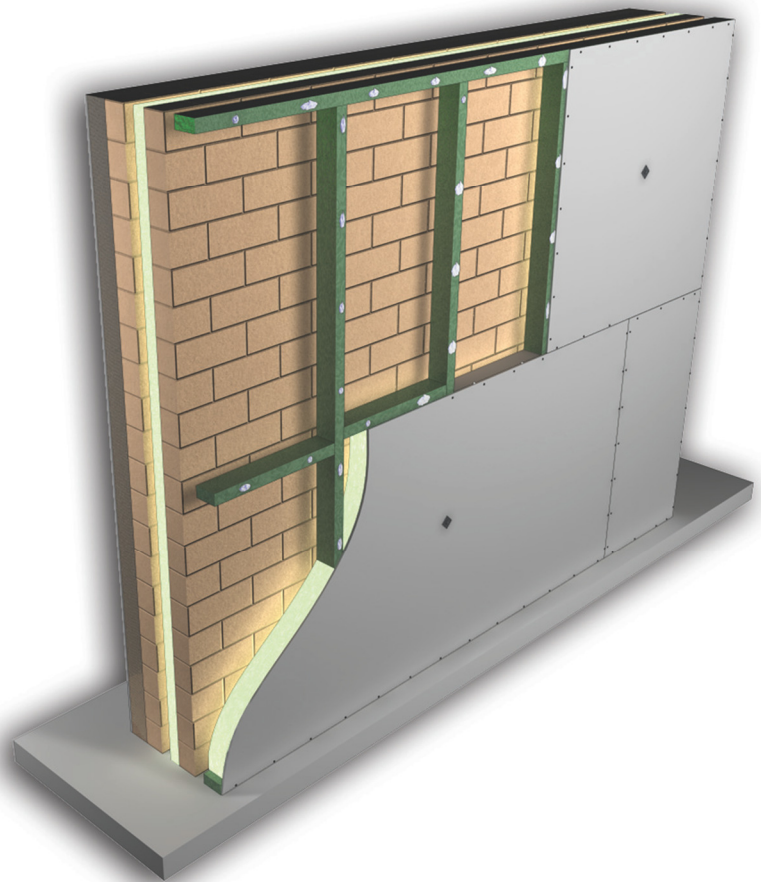


Figure 5.1 - Exterior Timber Wall Installation Details

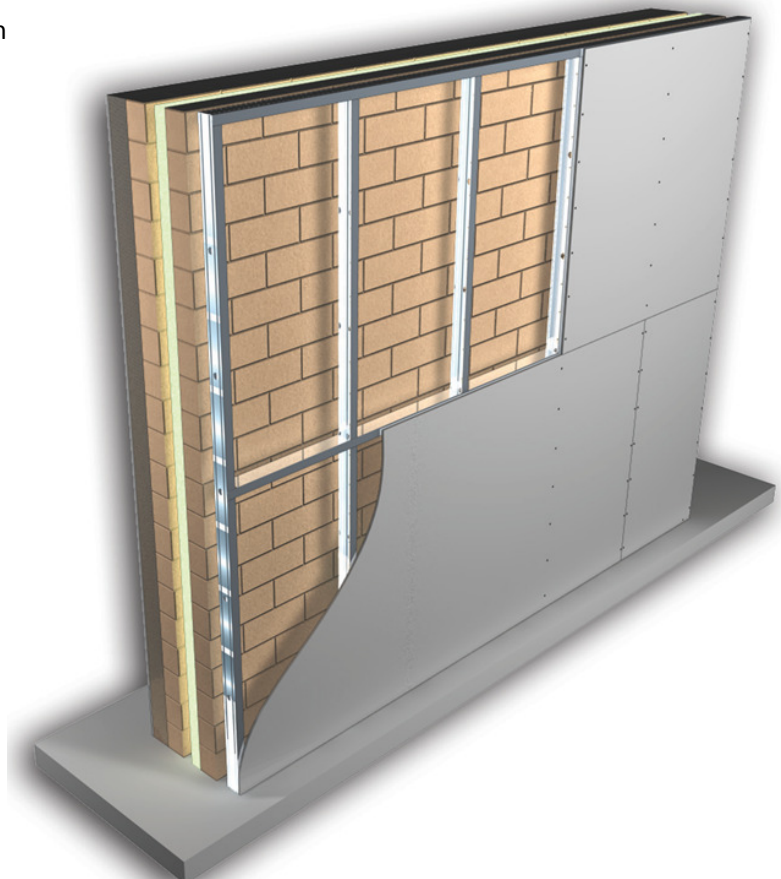


Figure 5.2 - Exterior Steel Wall Installation Details

Technical Support

Email: rescombp@rescombp.com

Web: www.rescombp.com